

# MINNESOTA

## STATEWIDE CONSERVATION AND PRESERVATION PLAN



[www.mnconservationplan.net](http://www.mnconservationplan.net)

Minnesota's quality of life and economic vitality depend on clean air and water, abundant fish and wildlife, healthy forests, and access to quality recreation. There is a growing consensus among policy makers, state agencies, public interest groups, anglers, hunters, scientists, recreational users, and business leaders that we urgently need a comprehensive plan for Minnesota's environmental future.

Complex and rapid changes affecting our landscapes and watersheds can no longer be addressed in a piecemeal fashion. The water-related needs of people, fish and wildlife need to be addressed in an integrated manner as metropolitan areas continue to expand. An ongoing conversion of forest lands into disconnected parcels needs to be seen alongside the resulting threat to the economic viability of the forest products industry and the resilience of forest ecosystems. There is a need to consider possible effects of climate change on animal and plant communities, and on outdoor recreation activities.

All these factors point to an overarching need to forge a more interconnected understanding of the state's environment and natural resources, and to build this understanding into a strategic plan for managing those resources going forward. To this end, the Legislative-Citizen Commission on Minnesota Resources (LCCMR) has funded a proposal to develop a Statewide Conservation and Preservation Plan. This plan will:

**Be Comprehensive.** Teams of experts will address the full range of natural resources: land, vegetation, water, air, fish, wildlife, and recreation, and will:

- Review and evaluate other conservation planning and research projects to create a complete overview of current efforts in this area;
- Identify any significant gaps in these current efforts; and
- Create an integrated strategy and action plan for natural resource conservation and preservation going forward.

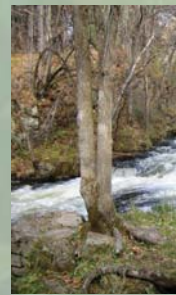
**Engage Conservation Constituencies.** The planning process includes a wide-ranging outreach component that will:

- Reach out to agencies and organizations with conservation and preservation missions from the beginning so that their knowledge and experience informs the plan.
- Engage the public:
  - At the outset, to gather local knowledge and ascertain the public's vision for resource preservation and its priorities for specific issues; and
  - As recommendations emerge, to gather the public's reactions to these specific proposals and suggestions for refining and implementing them.

---

**Legislative-Citizen Commission on Minnesota Resources (LCCMR)**

Funding from the Minnesota Environment and Natural Resources Trust Fund



**Address Near- and Long-Term Natural Resource Issues.** The plan will be developed in two phases:

- The *preliminary* plan, due July 1, 2007, will identify current, emerging and future natural resource issues and trends and present preliminary recommendations.
- The *final plan*, due July 1, 2008, will provide a detailed, action-oriented recommendations for the long-term conservation and preservation of Minnesota's natural resources, including:
  - Recommendations for future research and data gathering;
  - A prioritized list of specific issues to be addressed and strategies for addressing them;
  - A general cost and benefit analysis of the proposed strategies; and
  - Benchmarks to measure and evaluate progress.

**To develop the plan, the LCCMR has engaged a public/private partnership led by the University of Minnesota's Institute on the Environment.**

This partnership includes:

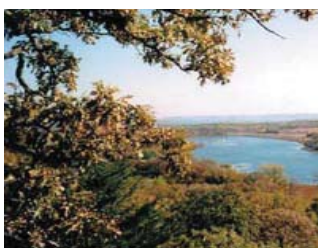
- Consultants from Bonestroo and CR Planning, private-sector experts in planning and natural resources.
- Researchers from the University of Minnesota, including 45 faculty drawn from 12 departments and representing an extremely broad and deep range of scientific expertise in the field.
- Representatives from all interested agencies and organizations.

**Visit us on the web:**

**[www.mnconservationplan.net](http://www.mnconservationplan.net)**

**Find project details and track progress  
Give us your views and goals for Minnesota's environmental future  
Preview and comment on our research and recommendations**

*For more information: [info@mnconservationplan.net](mailto:info@mnconservationplan.net)*



**UNIVERSITY OF MINNESOTA**

